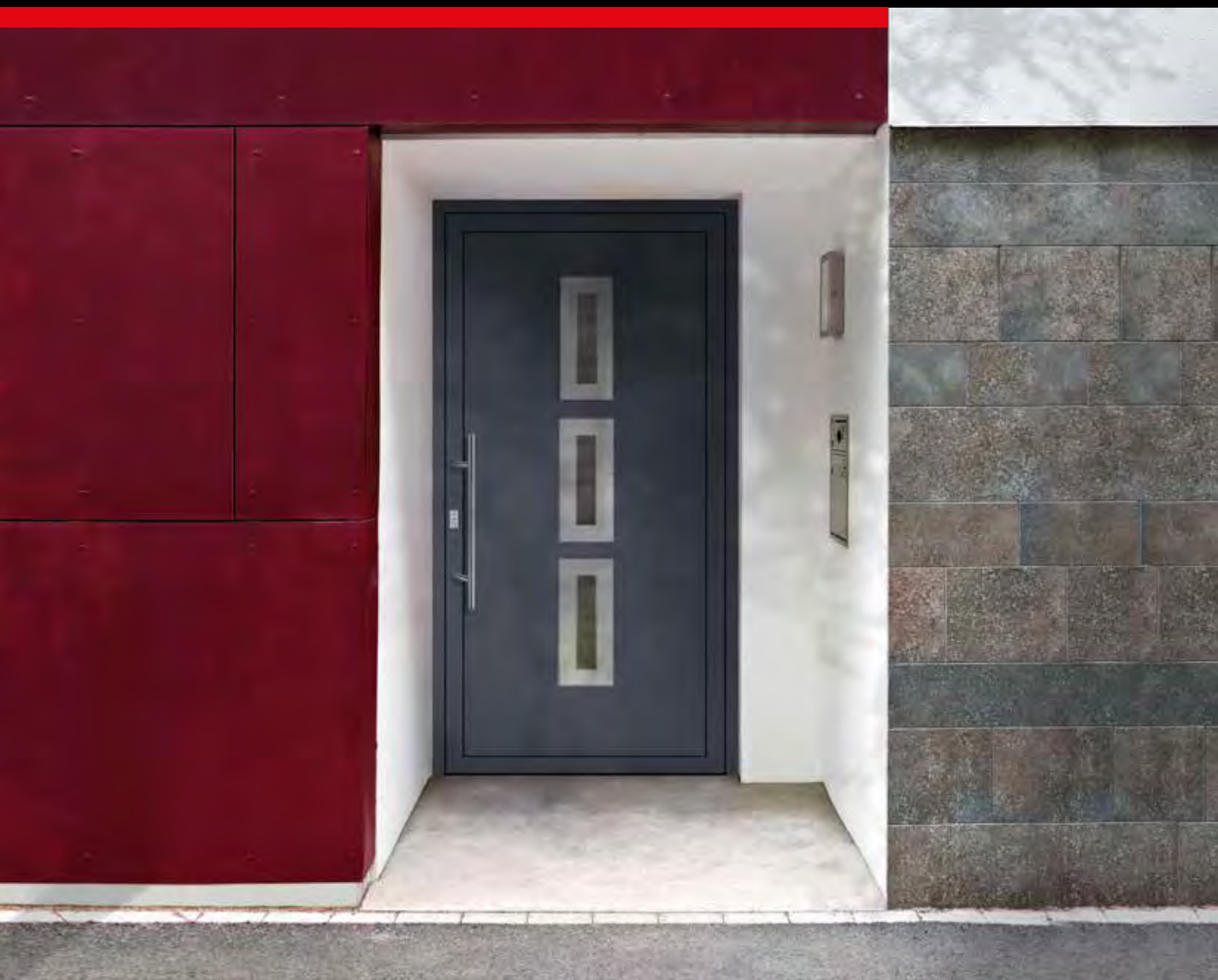


Live the way you are – naturally individual:  
**UNILUX uPVC entry doors**



UPVC ENTRY DOOR OVERVIEW

Live the way you are – naturally individual:  
UNILUX uPVC entry doors



---

# Contents

---

UNILUX: Where quality is at home	4-5
All good things come in sixes: Brand advantages of UNILUX	6-7
Advantages of uPVC	8-9
UNILUX IsoStar uPVC entry doors	10-27
Glass	28-31
Freedom to chose styles and materials	32-37
Handles and handle Styles	38-41
Protection and security	42-47
Overview	48-49
The reliability of a proven name	50-51



Live the way you are – naturally individual:  
UNILUX uPVC entry doors







**UNILUX**

---

# One brand. One promise.

---

The only thing modern-day entry doors have in common with their "ancestors" is their name. Good carpentry alone is no longer enough, because energy efficiency, safety, and functionality standards have increased dramatically to meet today's customer needs.

That's why all UNILUX uPVC products are developments, demonstrating an extraordinary degree of product intelligence and complex engineering.

**To ensure these masterpieces are not just available to a selected group of people, UNILUX produces them as series, enabling the unique products to be sold at a price which makes top quality affordable.**

**UNILUX – where quality is at home**

## All good things come in sixes:

# The UNILUX brand advantages

### Brand advantage 1: Durability

Since we were founded, UNILUX has always used the highest-quality materials. Down to the finest detail: In the sash we use hand-drawn synthetic rubber seals instead of PVC. These are characterized by a long service life and excellent resilience. The high-quality production and strict quality control guarantee that you will enjoy your UNILUX entry door for years.

### Brand advantage 2: Freedom of design

Some things are a matter of taste. Thus, you can choose from 35 models, 40 different color and wood patterns, 23 different external push handles as well as several double and triple-glazings. And let's not forget: various possible combinations with optional side panels and fanlights. Variety right from the factory.

### Brand advantage 3: Energy balance

UNILUX's solid construction style not only guarantees durability, but also helps save energy. By default, each of our uPVC doors also comes with three seals and a „warm edge“ with glazing, i.e. over an edge where the spacer between the panes has only a low thermal conductivity. That provides better insulation values, more comfort in the vicinity of the door, and significantly less condensation in cold months. Heating costs can be further reduced through highly efficient triple glazing with a thickness of 48 mm (SuperThermo3, UltraThermo3, ThermoWhite3).



### **Brand advantage 4: Security**

Sometimes an entry door doesn't just have to withstand rain and stormy weather, but also unwelcome guests. That is why all UNILUX entry doors are equipped with three-point locks, optionally with bolts or swivel locks.

### **Brand advantage 5: Service**

UNILUX only works with expertly qualified window specialist retailers, located across the country with their own showrooms. Your regional UNILUX retailer will offer you detailed advice and assist you with your plans. It will also ensure prompt, correct installation, and will be available at any time if you have any service-related needs.

### **Brand advantage 6: Brand quality**

Since 1955, UNILUX's philosophy has been: Only products of uncompromising quality must leave the factory. This saw our company become a recognised quality leader over the decades. Anyone who pays heed to the UNILUX logo can be certain of always receiving a "Made in Germany"-branded product.



Live the way you are – naturally individual:  
UNILUX uPVC entry doors



## ADVANTAGES OF UPVC

---

# Developed for generations

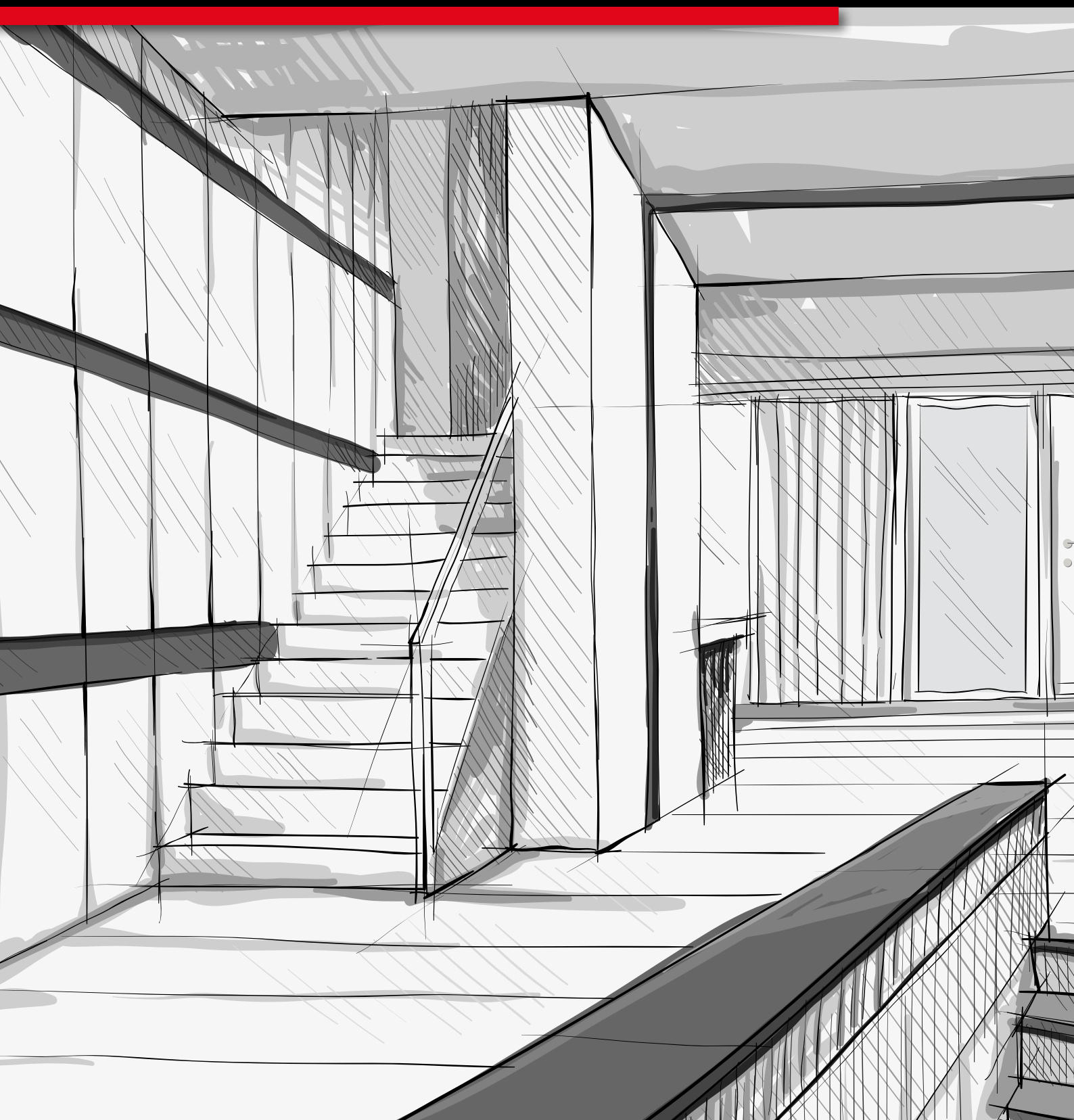
---

Entry doors have to withstand a lot of things. That's why we only use uPVC whose toughness, resilience and resistance to heat and cold can cope with hot summer days, autumn storms and cold winter nights. Internal steel reinforcement also ensures maximum durability.

**The only understated area is the cost. You'll receive our uPVC handiwork at a price not worth compromising on.**

**uPVC entry doors by UNILUX: The originals.**

Live the way you are – naturally individual:  
**UNILUX uPVC entry doors**





## UNILUX IsoStar ENTRY DOORS

---

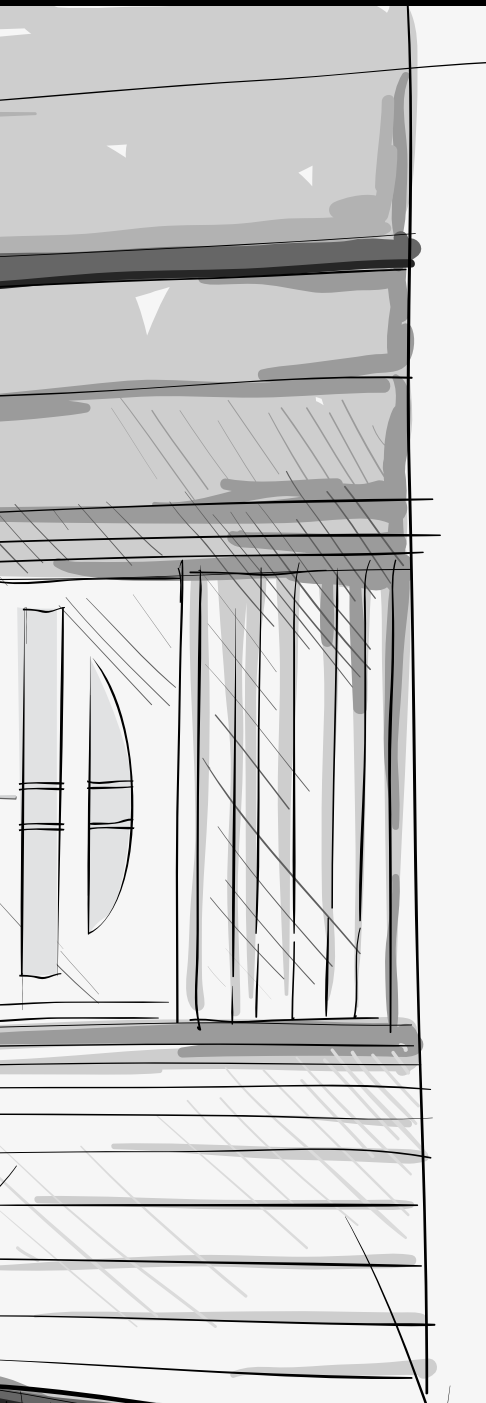
Unique.  
Beautiful.  
Affordable.

---

For a house planner, an entry door may only represent a connection between inside and outside, but it's actually a lot more. It's the business card for your house. The visible access to your individual, unique home. That's why it should reflect your individuality too, and show the world outside just who you are.

**UNILUX uPVC entry doors stand for variety in form and color. The broad palette of styles guarantees that you can express your personal taste.**

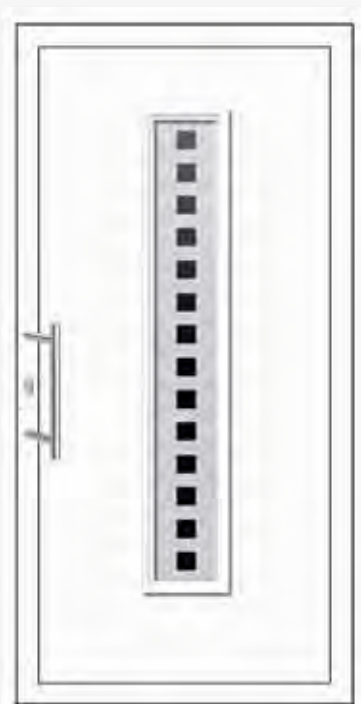
**Great design at a pleasing price –  
UNILUX IsoStar entry doors.**





#### Model 7101

Milled panel  
 Slate gray color  
 Both sides without ornamental frame  
 Outside with two applications of V4A stainless steel  
 Design glass  
 Handle 7050



#### Model 7102

Both sides with ornamental frame  
 White color  
 Interior view like exterior  
 Design glass  
 Handle 7050



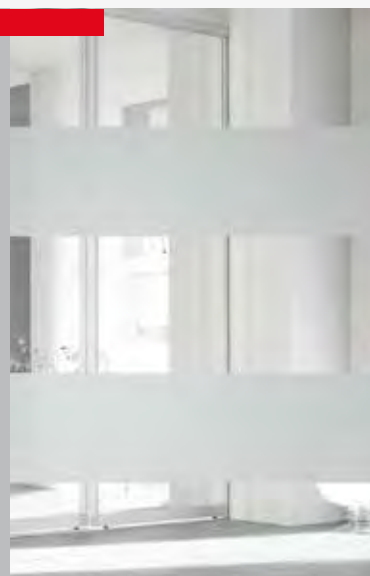
#### Model 7104

Milled panel  
 Slate gray color  
 Both sides without ornamental frame  
 Exterior with pilaster strips of V4A stainless steel, interior with 5 mm wide grooves  
 Design glass  
 Handle 7038

#### Note:

Please note that the clear glass surfaces in the model illustrations are shown in dark. The lighter areas are matted glass.

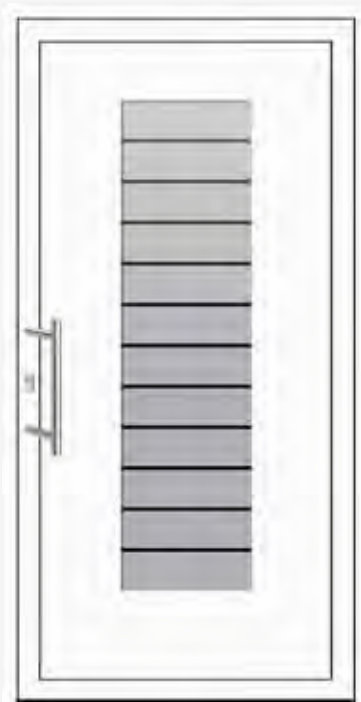
Clear glass and matting





#### Model 7105

.....  
Both sides with ornamental frame  
White color  
Interior view like exterior  
Design glass  
Handle 7050



#### Model 7106

.....  
Milled panel  
White color  
Both sides without ornamental frame,  
interior view like exterior  
Design glass  
Handle 7050



#### Model 7107

.....  
Milled panel  
Black cherry color  
Both sides without ornamental frame  
Exterior with pilaster strips of V4A  
stainless steel, interior with 5 mm  
wide grooves  
Design glass  
Handle 7038





#### Model 7108

Both sides with ornamental frame  
 White color  
 Interior view like exterior,  
 mirrored Design glass  
 Handle 7050



#### Model 7109

Milled panel  
 Siena rosso color  
 Both sides without ornamental  
 frame, interior view like exterior,  
 mirrored  
 Design glass  
 Handle 7050



#### Model 7110

Both sides with ornamental frame  
 Anthracite gray color  
 Interior view like exterior,  
 mirrored Design glass  
 Handle 7050

#### Our tip for you:

Refined design glass types  
 with inlaid glass crystals  
 offer many options for  
 your personal entry door.

Design glass





### Model 7110G

.....  
 Closed  
 White color  
 Ornaments on the outside,  
 smooth interior  
 Handle 7050



### Model 7111

.....  
 Both sides with ornamental frame  
 White color  
 Exterior with application of V4A  
 stainless steel  
 Interior view like exterior  
 Design glass  
 Handle 7050



### Model 7112

.....  
 Milled panel  
 White color  
 Both sides without ornamental  
 frame,  
 exterior with pilaster strips of V4A  
 stainless steel,  
 interior with 5 mm wide grooves  
 Design glass  
 Handle 7050



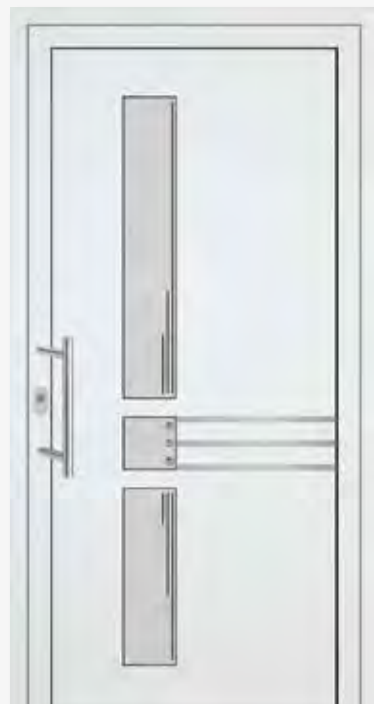
#### Model 7112G

Both sides without ornamental frame  
 Dark oak color  
 Exterior with pilaster strips of V4A  
 stainless steel, interior with 5 mm  
 wide grooves  
 Handle 7050



#### Model 7113

Milled panel  
 Dark red color  
 Both sides without ornamental frame  
 Interior view like exterior  
 Design glass  
 Handle 7050



#### Model 7114

Milled panel  
 White color  
 Both sides without ornamental frame,  
 exterior with pilaster strips of V4A  
 stainless steel, interior with 15 mm wide grooves  
 Design glass  
 Handle 7050

#### Our tip for you:

Faceted, ground design  
 glass reflects the natural  
 sunlight and lets your entry  
 door sparkle.

Design glasses



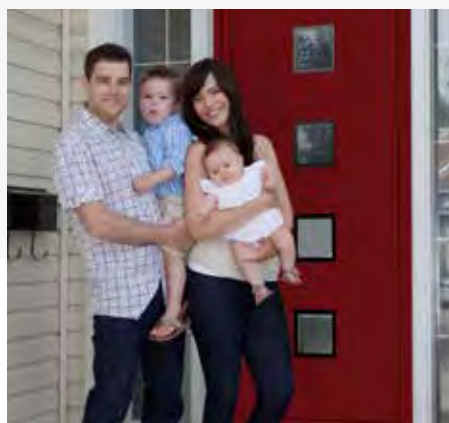




### Model 7110

Slate gray color

Model description page 15



### Model 7113

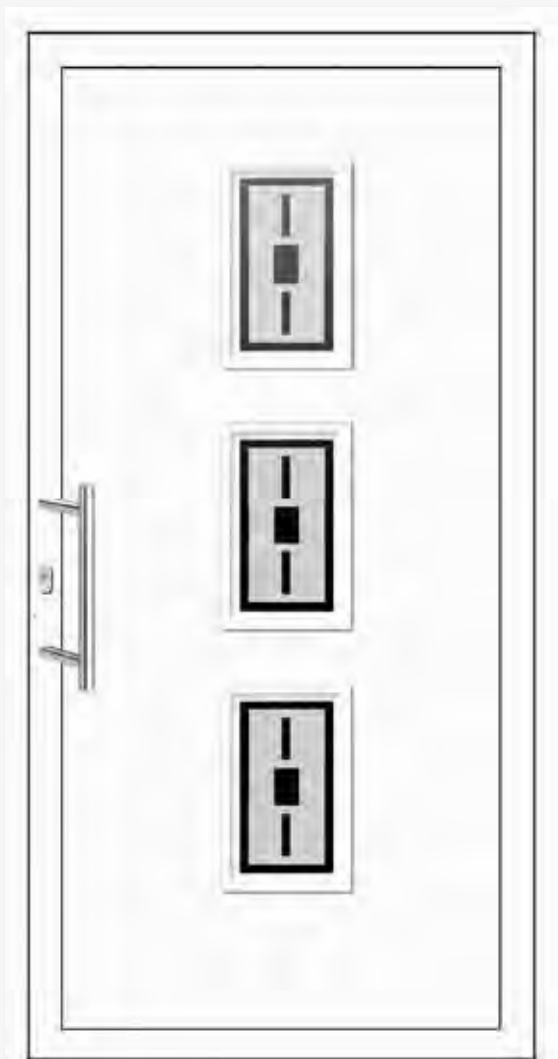
Dark red color, similar to RAL 3011



### Model 7112

White color

Model description page 15



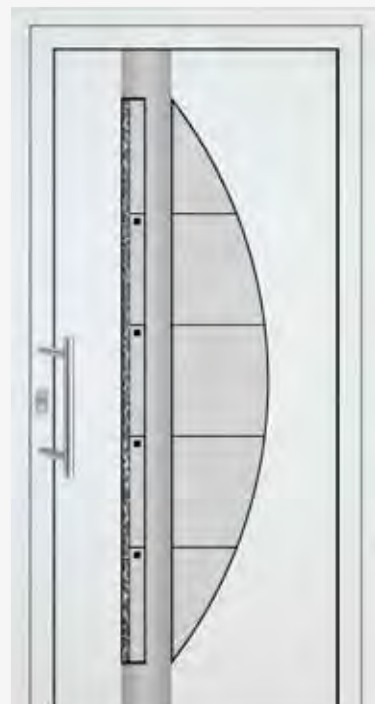
#### Model 7115

Both sides with ornamental frame  
 White color  
 Interior view like exterior  
 Design glass  
 Handle 7050



#### Model 7116

Milled panel  
 Anthracite gray color  
 Both sides without ornamental frame  
 Interior view like exterior  
 Design glass  
 Handle 7050



#### Model 7117

Milled panel  
 White color  
 Both sides without ornamental frame,  
 exterior with an application of V4A  
 stainless steel  
 Design glass  
 Handle 7050

#### Our tip for you:

The ultra-slim, weather-resistant door threshold has excellent thermal insulation values and is also particularly low-maintenance.

#### Profiled kick plate

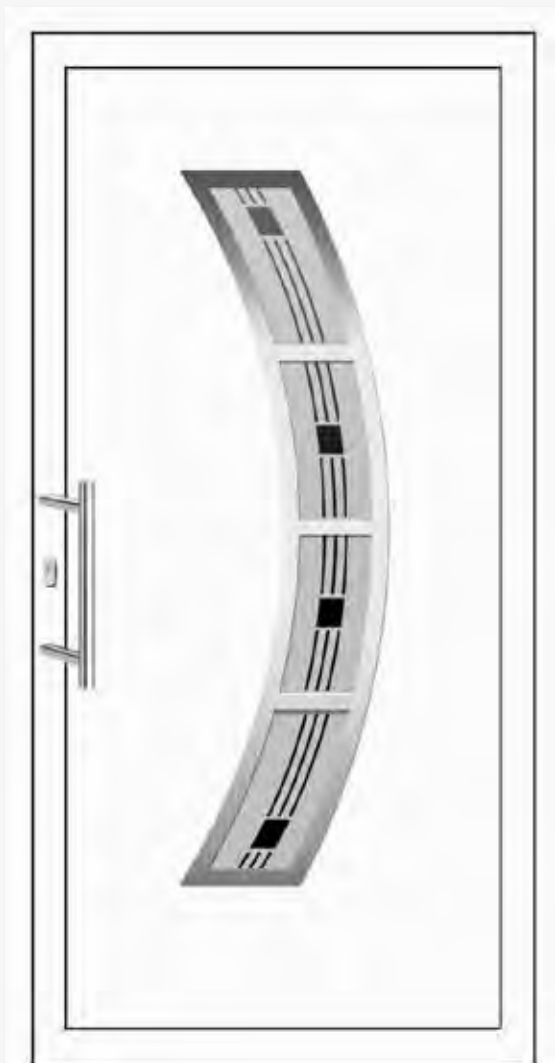




**Model 7107**

White color

Model description page 13



#### Model 7119

Both sides with ornamental frame  
White color  
Exterior application of V4A stainless steel  
Interior view like exterior, mirrored  
Design glass  
Handle 7050



#### Model 7120

Milled panel  
Silver gray color  
Both sides without ornamental frame,  
exterior with an application of V4A  
stainless steel  
Design glass  
Handle 7050



#### Model 7120G

Milled panel  
Bog oak color  
Both sides without ornamental frame,  
exterior with an application of V4A  
stainless steel  
Handle 7050

#### Our tip for you:

The one-piece striker plate ensures a visually attractive appearance when locked and is also particularly easy to clean.

#### One-piece striker







**Model 7115**

White color

Model description page 18



**Model 7120G**

Bog oak color







#### Model 7121

Both sides with ornamental frame  
Bog oak color  
Interior view like exterior  
Design glass  
Handle 7050



#### Model 7122

Both sides with ornamental frame  
Anthracite gray color  
Interior view like exterior  
Handle 7050



#### Model 7123

Milled panel  
Slate gray color  
Both sides without ornamental frame,  
both sides with 15 mm groove  
Interior view like exterior  
Design glass  
Handle 7050

#### Our tip for you:

Hand-made glass crystals,  
arranged as a decorative  
flower, provide a detailed  
attention-getter on your  
entry door.

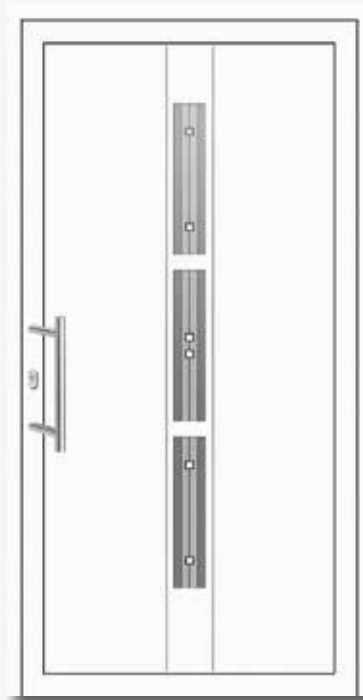
#### Glass details





#### Model 7124

Both sides with ornamental frame  
and profiles  
White color  
Interior view like exterior  
Design glass  
Handle 7050



#### Model 7125

Milled panel  
White color  
Both sides without ornamental  
frame, exterior with an application  
of V4A stainless steel  
Design glass  
Handle 7050



#### Model 7125G

Milled panel  
Bog oak color  
Both sides without ornamental frame,  
exterior with an application of  
V4A stainless steel  
Handle 7050



#### Model 7126

Both sides with ornamental frame  
 and doublers  
 White color  
 Interior view like exterior  
 Design glass  
 Handle 7050



#### Model 7126G

Both sides with ornamental frame  
 and doublers  
 Golden Oak Color  
 Interior view like exterior  
 Handle 7050



#### Model 7127

Both sides with ornamental frame  
 Slate gray color  
 Interior view like exterior  
 Design glass  
 Handle 7050

#### Our tip for you:

Specially developed shaped  
 parts, with perfectly fit  
 machining, ensure the best  
 possible seal and thermal  
 values.

#### Shaped parts





### Model 7128

Both sides with ornamental frame  
Golden Oak Color  
Doublings and ornamental profile, interior with slimmer ornamental profile  
Design glass  
Handle 7050



### Model 7129

Both sides with ornamental frame  
White color  
Interior view like exterior  
Design glass  
Handle 7050



### Model 7130

Both sides with ornamental frame and doublers  
White color  
Interior view like exterior  
Design glass  
Handle 7050



#### Model 7131

Fir green color



#### Model 7131

Both sides with ornamental frame  
 and doublers  
 Fir green color  
 Interior view like exterior  
 Design glass  
 Handle 7050



#### Model 7131G

Both sides with ornamental frame  
 and doublers  
 White color  
 Interior view like exterior  
 Design glass  
 Handle 7050

#### Our tip for you:

The hinges, adjustable in three dimensions and with specially hardened threaded bolts, ensure both safety and smooth opening.

#### Hinges







**Model 7131G**

White color



**Model 7127**

Slate gray color

Optional sidelight

Model description page 24



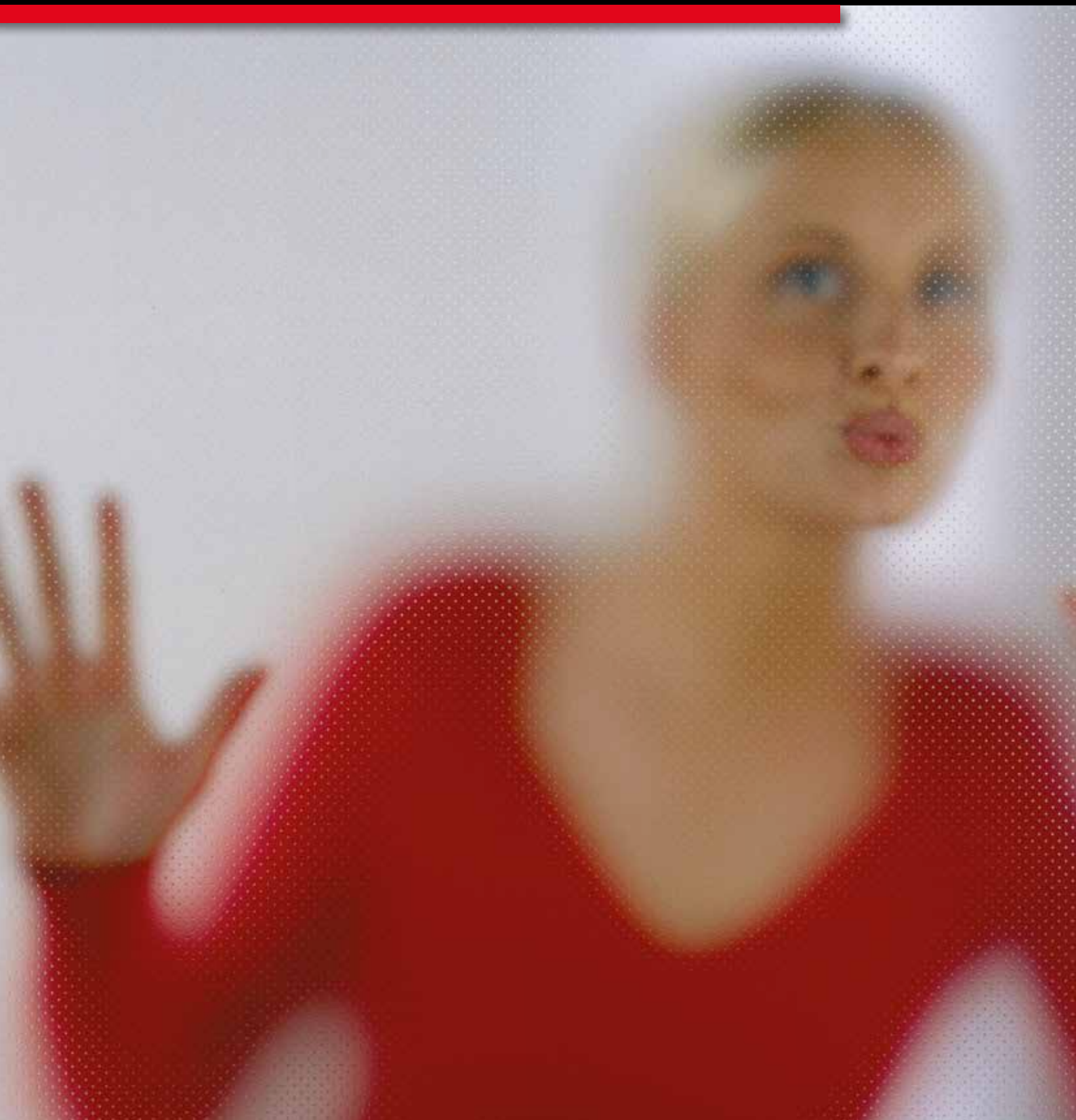
**Model 7130**

White color

Optional sidelights

Model description page 25

Live the way you are – naturally individual:  
UNILUX uPVC entry doors





## Crystal-clear style

---

# Glass and glass varieties

---

Glass is a special material which gives every door its own individual character. We offer an extensive variety of front door glass models – as well as personalised design suggestions for each door, allowing you to create your very own style even when selecting the glass.

**UNILUX glass impresses customers because it lets natural light in, but prevents outsiders from seeing in. Each of our ornamental and design glass products is proof that beauty and function don't have to be polar opposites.**

**UNILUX – Glass can be so unique.**



### Temptation alert!

This sample case could cause a commotion. Because it shows you what's possible when it comes to glass. It doesn't always have to "just be smooth". Ornamental and design glass add structure and oomph to a familiar material.

Ask your UNILUX specialty retailer in person. They'll gladly open the UNILUX glass sample case for you.

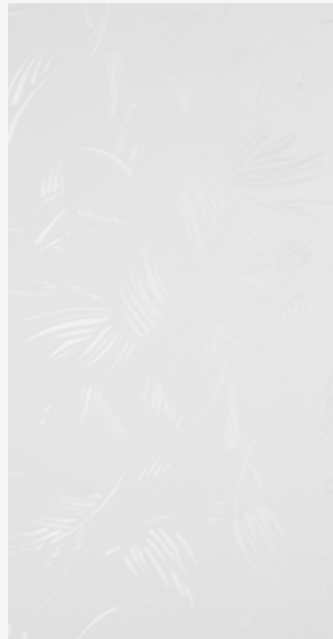




Madras Flos



Uadi white



Flamme



Flutes blank matt



Punto white



Satinato



Pave matt white





Live the way you are – naturally individual:  
UNILUX uPVC entry doors



**Just the way you are**

---

# Your ideal door by UNILUX

---

There's no such thing as a cookie-cutter approach at UNILUX. Each entry door is an individual creation for which you not only choose the model, size and shape, but also decide on lots of other details.

**You can add your own personal touch with optional side panels and transom windows. The choice of glass and handle will also express your unique, individual tastes.**

**That's how UNILUX offers individuality works.**



**Model 7101**

---

Anthracite gray color

Model description page 12



**Model 7125**

---

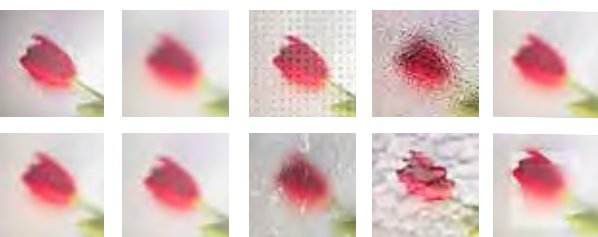
White color with optional sidelight

Model description page 23

## Freedom of choice in size and shape

### Chic series production

You can choose from many different designs.



### More than just light

Not all glass is the same. Just think how varied this familiar material can be. From simple obscure glass to striking designer glass.

### Getting a grip on design

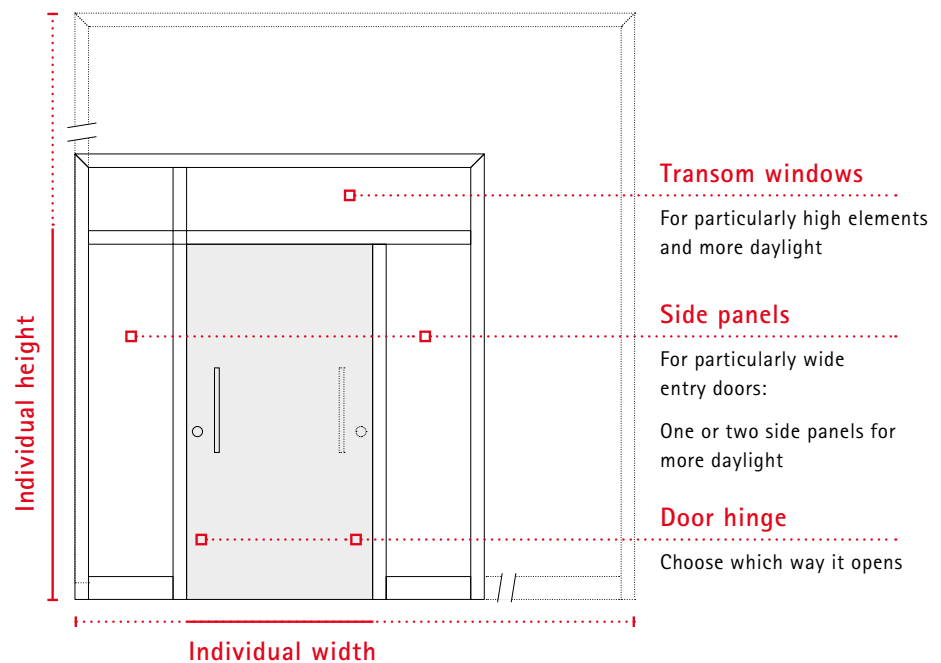
Sweeping brass or straight-lined stainless steel? Historically classic or minimalistically modern? Each UNILUX handle is not only a solid piece of handicraft, but also an aesthetic gem allowing you to express your taste and style.



## Fits like a glove

How big should an entry door be? Which way should it open? Is it better to have one or two panels? And how much daylight should the door let in? These are questions each person will answer differently.

That's why UNILUX not only offers you customized entry doors with your requested lengths and width, but also with the options of your choice. For example, with one or two side panels and transom windows. Elements which accentuate your door and add extra design features.



**Model 7107**

Slate gray color

Model description page 13



**Model 7106**

White color with optional sidelight

Model description page 13



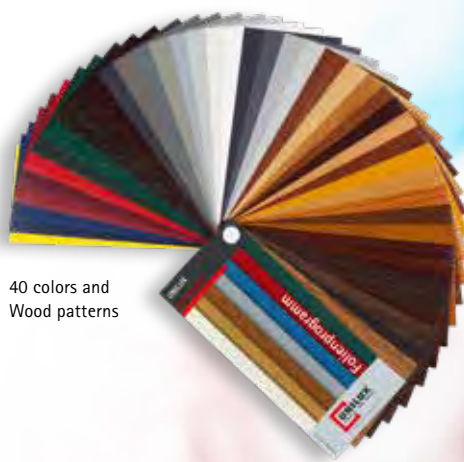
## Freedom to choose colour and look



### Individual and matching

Each UNILUX door not only matches your house in terms of design, but also in terms of colour. Because the selection of colours and shades leaves nothing to be desired.

Ask your UNILUX retailer for the color swatches, so you can be sure your favourite red (or grey or blue or...) is what appears on your entry door.



40 colors and  
Wood patterns





Live the way you are – naturally individual:  
UNILUX uPVC entry doors



## A handle on aesthetics

---

# Hardware

---

A door handle must be tough – not everyone will be treating it with kid gloves. Durability is thus a basic requirement for a good handle. But we're not just interested in the material quality – appearance is also important to us.

**A UNILUX door handle always creates an inviting feel. It complements the architecture, and is the icing on the cake for a model door.**

**UNILUX door handles – nice to hold, impressive to look at.**



### Model 7104

---

Slate gray color with two optional sidelights  
Model description page 12



**7050**

Stainless steel  
Pole = 400 mm



**7017**

Stainless steel  
Pole = 325 mm



**7019**

Stainless steel  
Pole = 335 mm



**7002**

Stainless steel  
Pole = 400 mm



**7022**

Stainless steel  
Length = 400 mm



**7033**

Stainless steel  
Pole = 400 mm



**7014**

Stainless steel  
Length = 600 mm



**7038**

Stainless steel  
Pole = 600 mm



**7036**

Stainless steel  
Pole = 600 mm



**7031**

Stainless steel  
Pole = 600 mm



**7026**

Stainless steel  
Pole = 600 mm





**7010**

Stainless steel  
Length = 330 mm



**7011**

Stainless steel  
Length = 330 mm



**7012**

Stainless steel  
Length = 330 mm



**7013**

Stainless steel  
Length = 335 mm



**5003**

Stainless steel



**5300**

Stainless steel



**7027**

Stainless steel  
Pole = 800 mm



**7037**

Stainless steel  
Pole = 1200 mm



**7039**

Stainless steel  
Pole = 1000 mm



**7004**

Stainless steel  
Pole = 504 mm



**7005**

Stainless steel  
Pole = 480 mm



**7001**

Brass polished  
Pole = 300 mm



Live the way you are – naturally individual:  
UNILUX uPVC entry doors



## Security

---

# Not popular among thieves

---

Burglars are always pressed for time. The harder you make things for them, the quicker they give up. That's why UNILUX is not only concerned with design and comfort, but also with safety devices and locks. And this should never be compromised – a belief we take to heart in our daily work.

**Good to know: Even the basic UNILUX entry doors have effective safety mechanisms. We also offer additional devices which further enhance the standard safety features.**

That way, UNILUX does its bit towards ensuring unwanted guests are kept out.





#### **Solid door structure with an end-to-end lock faceplate**

When it comes to security, the more you have the better. The more solid the door, the more resistant it will be to offenders. With thicknesses of up to 31/8"/79 millimetres, our models offer durable natural protection.

All our models have an end-to-end metal lock faceplate in the frame. This means that, since the locking mechanism is generally firmly fixed into the closing sections, the potential perpetrator would have to smash the entire plate out of the door frame – involving a lot of extra effort and significantly inhibiting the burglar.



#### **Multi-point locking system**

##### **Standard side-entry doors**

3-point lock (with 2 safety bolts and 1 deadbolt)

##### **Standard AkzentLine**

3-point safety lock with end-to-end lock faceplate

##### **Special AkzentLine**

4-point safety lock with door catch and end-to-end lock faceplate.



#### **Door catches**

More effective and more elegant than a door chain.

The optional door catch serves as an additional interior lock, and as a safety catch when the door is easily opened, making it impossible for uninvited guests to get a foot in the door.

##### **Please note:**

When the door catch is activated, the entry door can be opened 4 cm. Depending on the construction, widening profiles may be necessary in order to see through the 4-cm gap.





### Anti-lift device

All UNILUX entry doors come with two anti-lift devices on the hinge side, significantly inhibiting force entries caused by jimmying.

### Safety glass

Thanks to a specially developed, highly tear-proof polycarbonate film, the optional safety glass stays shut even if the normal glass cracks – good for you, bad for potential burglars. The UNILUX's anti-vandal P2A safety glass is incidentally certified by the German National Authority on Fire Arms and Ammunition.



#### KUStandard

Three-point interlock of stainless steel with two massive bolts and an one-piece striker plate.



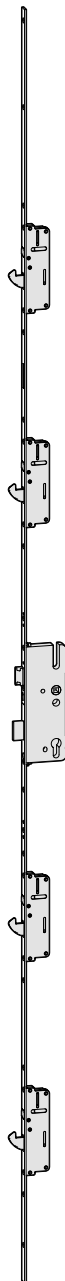
#### KUT3PSVTF

Three-point interlock of stainless steel with two massive bolts, a door catch, and an one-piece striker plate.



#### KUT5PSV

Five-point interlock of stainless steel with four massive bolts and an one-piece striker plate.



#### KUT3PAV

Automatic three-point interlock of stainless steel with two automatic interlocks and an one-piece striker plate.



#### Lock for side entry door

Three-point interlock of stainless steel with two bolts and an one-piece striker plate.



## Interior handle



**4007**  
Stainless steel



**4009**  
Stainless steel



**4008**  
Stainless steel



**4006**  
Stainless steel



**2300**  
Stainless steel



**2301**  
Stainless steel

## Rosetten



**3007**  
Stainless steel

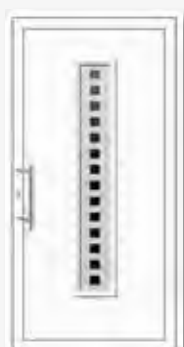


**3008**  
Stainless steel





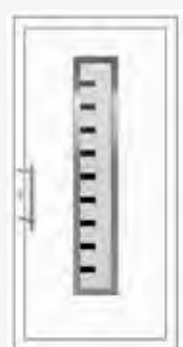
Page 12  
 Model 7101



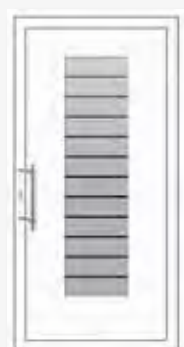
Page 12  
 Model 7102



Page 12  
 Model 7104



Page 13  
 Model 7105



Page 13  
 Model 7106



Page 13  
 Model 7107



Page 14  
 Model 7108



Page 14  
 Model 7109



Page 14  
 Model 7110



Page 15  
 Model 7110G



Page 15  
 Model 7111



Page 15  
 Model 7112



Page 16  
 Model 7112G



Page 16  
 Model 7113



Page 16  
 Model 7114



Page 18  
 Model 7115



Page 18  
 Model 7116



Page 19  
 Model 7117





Page 20  
Model 7119



Page 20  
Model 7120



Page 20  
Model 7120G



Page 22  
Model 7121



Page 22  
Model 7122



Page 22  
Model 7123



Page 23  
Model 7124



Page 23  
Model 7125



Page 23  
Model 7125G



Page 24  
Model 7126



Page 24  
Model 7126G



Page 24  
Model 7127



Page 25  
Model 7128



Page 25  
Model 7129



Page 25  
Model 7130

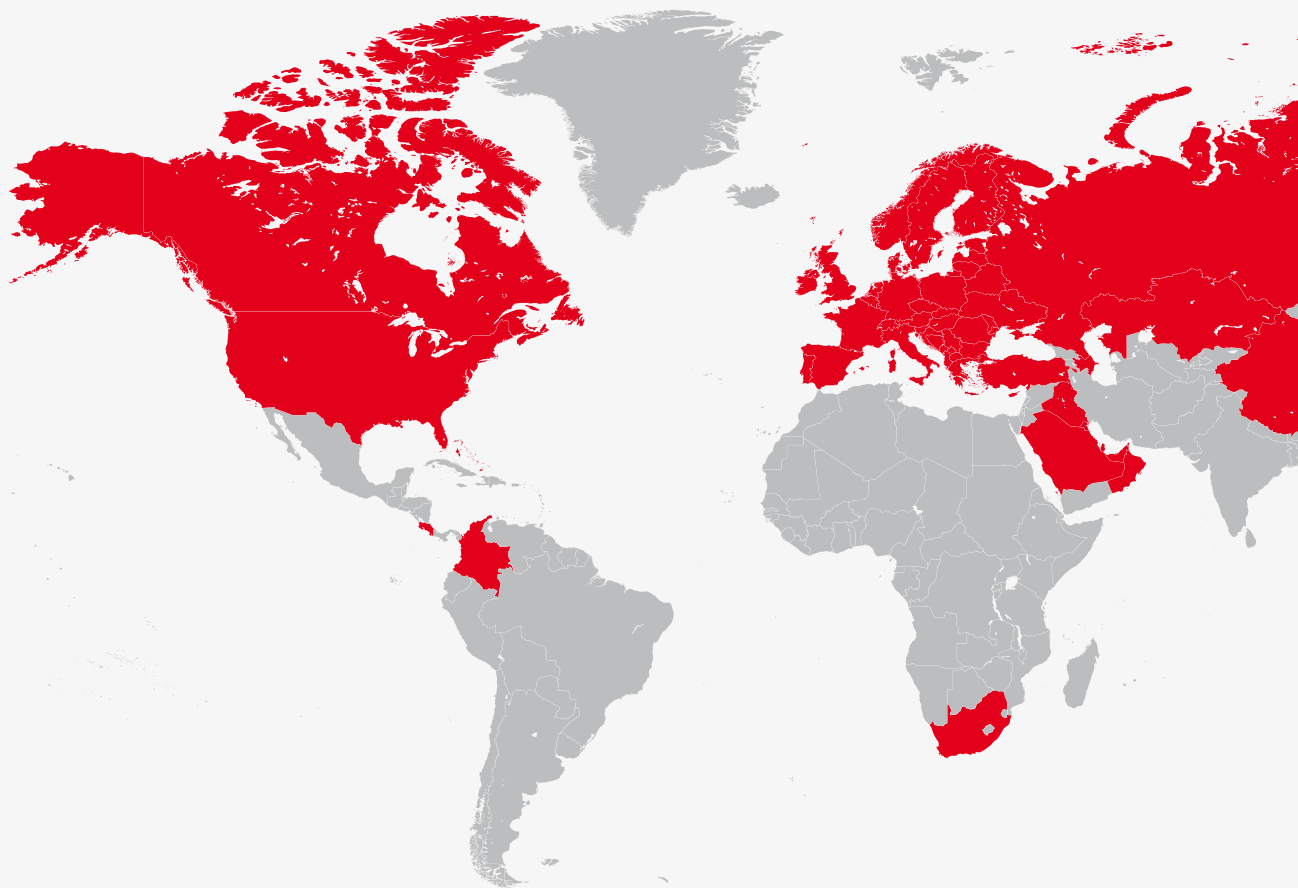


Page 26  
Model 7131



Page 26  
Model 7131G

## The reliability of a big name



UNILUX ensures award-winning long-term progress

- by selecting the right partners and raw-material suppliers, and by being a member of leading institutions and associations:



UNILUX products meet international test and safety standards:



**HURRICANE TEST**  
Large Missile Impact and Cyclic Load  
AAMA/WDMA/CAS ASTM E1886/E1996  
TAS 201-203



Florida Certificate  
of Product Approval



## Company info

---

### Publisher

UNILUX GmbH  
54528 Salmtal / Germany  
Telephone +49(0)6578/189-0  
Facsimile +49(0)6578/1880  
Email [info@unilux.de](mailto:info@unilux.de)  
[www.unilux.de](http://www.unilux.de)

### Notes

The content of this catalogue is not legally binding and may be subject to technical changes as part of further developments or errors in the text, images or descriptions. We only allow images and text material – including excerpts – to be used upon request, and with our express written consent.

The image material used is for illustrative purposes. Differences in colour are unfortunately unavoidable due to printing. The sample illustrations are not to scale.

© 2019 , UNILUX GmbH. All rights reserved.



UNILUX headquarters, Salmtal

Photos: UNILUX, iStockphoto, Fotolia, Shutterstock

UNILUX GmbH  
54528 Salmtal / Germany  
Telephone +49(0)6578/189-0  
Facsimile +49(0)6578/1880  
E-Mail [info@unilux.de](mailto:info@unilux.de)

**[www.unilux.de](http://www.unilux.de)**



WHERE QUALITY IS AT HOME

Member of the **WERU** Group