

Live the way you are – naturally individual:  
**UNILUX** wooden entry doors



WOODEN ENTRY DOORS OVERVIEW



WHERE QUALITY IS AT HOME

Live the way you are – naturally individual:  
**UNILUX** wooden entry doors





---

# Contents

---

UNILUX: Where quality is at home	4-5
All good things come in sixes: Brand advantages of UNILUX	6-7
The world of UNILUX wooden entry doors	8-9
UNILUX wooden entry doors: ExclusivLine	10-13
UNILUX wooden entry doors: HighLine panel doors	14-21
UNILUX wooden entry doors: HighLine frame doors	22-31
UNILUX wooden entry doors: JuniorLine	32-37
Design freedom in shapes and materials	38-43
Glass	44-47
Handles and Handles variants	48-57
Advantages and technical details	58-61
Protection and security	62-63
Overview	64-65
The reliability of a big name – Made in Germany	66-67



Live the way you are – naturally individual:  
UNILUX wooden entry doors







**UNILUX**

---

# One brand. One promise.

---

Modern wooden doors only share a name with their „ancestors“. Good carpentry and appearance alone is no longer enough, because energy efficiency, safety and functionality standards have increased dramatically to meet today's customer needs.

That's why all UNILUX wooden doors are development projects that demonstrate intelligence and complex engineering.

**To be able to provide access to these masterpieces to more than just a select few customers UNILUX mass-produces them. That means it's possible for us to offer these unique wood products at a price that makes top quality affordable.**

**Where quality is at home – UNILUX**

All good things come in sixes:

---

# The UNILUX brand advantages

## Brand advantage 1: Durability

---

Since we were founded, UNILUX has always used the highest-quality materials. Down to the finest detail: UNILUX wood products rely on high-quality coatings with UV blockers. The high-quality production and strict quality control guarantee that you will enjoy your UNILUX product for years.

## Brand advantage 2: Freedom of design

---

Some things are a matter of taste. Thus, you can choose from three design lines (ExclusivLine, HighLine, JuniorLine), five fine woods (oak, spruce, pine, larch, eucalyptus grandis) as well as 189 colors and varnish wood shades (e.g. oak, mahogany, beech, walnut). Variety right from the factory.

## Brand advantage 3: Energy balance

---

UNILUX's solid construction style not only guarantees durability, but also helps save energy. Each of our wooden entry doors also has a specially developed insulating core and thermally separated spacers between the glass panes. This results in better thermal insulation, more comfort near the glass and significantly less condensation formation in cold months. Each UNILUX entry door is glazed with at least one 40mm thick triple pane. This will further reduce heating costs.



#### Brand advantage 4: Security

• Sometimes an entry door doesn't just have to withstand rain and stormy weather, but also unwelcome guests. That's why UNILUX makes all the locking parts of steel. In addition, each of our wooden entry doors already has a continuous striker plate in the standard version.

#### Brand advantage 5: Service

• UNILUX works exclusively with our own qualified retailers. You can find them anywhere in Germany, right on site with their own local showrooms. Your regional UNILUX retailer will offer you detailed advice and assist you with your plans. They will also ensure prompt, correct installation, and will be available at any time if you have any service-related needs.

#### Brand advantage 6: Brand quality

• At UNILUX, there has always been one fast rule: Only products of uncompromising quality leave the factory. This made our company a recognized quality leader over the decades. Anyone who pays heed to the UNILUX logo can be certain of always receiving a „Made in Germany“-branded product.



Live the way you are – naturally individual:  
UNILUX wooden entry doors



## Each one a masterpiece

---

# The world of UNILUX wooden entry doors

---

Wood gives a feeling of wellbeing. A unique material that outlasts all fashions and has always inspired carpenters and cabinetmakers to craftsmanship. Us, too.

### **ExclusivLine:** For the highest demands

---

No compromises! That's your motto. Because it is your dream house. Modern architecture meets the highest design standards. The matching door: ExclusivLine.

### **HighLine panel doors:** The showpieces

---

We have developed this model series with great attention to detail. The combination of high-quality materials and refined engineering is your guarantee for a door that will demonstrate its quality every day.

### **HighLine frame doors:** The classics

---

Our High Line frame doors are the epitome of a timeless design language. Designs that survive every trend and will continue to emit a perfect picture.

### **JuniorLine:** The little big things

---

Small in price, big in performance – that's the idea behind the models in the JuniorLine. Door after door, they show that brand quality can be affordable.



Live the way you are – naturally individual:  
**UNILUX** wooden entry doors





## UNILUX ExclusivLine entry doors

---

Style-defining.  
Future-looking.  
Unique.

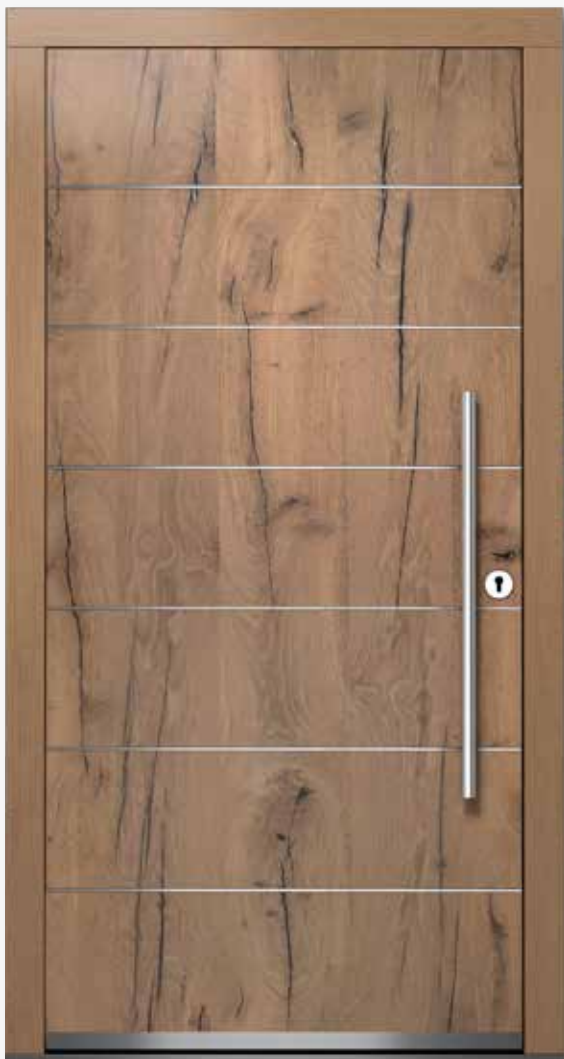
---

Wood does not have to be rustic. The UNILUX ExclusivLine effectively demonstrates how a traditional material forms the basis for groundbreaking design. In style, it consistently goes its own way. It is oriented towards the pioneers of the avant-garde, creating an entrance that is a work of art.

**If your entry door is the entrance to state-of-the-art architecture, then the ExclusivLine models are the perfect choice. You set the creative accent your dream home deserves.**

**Design in perfection: ExclusivLine.**





#### Model 2400

Oak old wood  
 Vertical fiber course with pilaster  
 strips in stainless steel  
 Handle 7041 stainless steel



#### Model 2401

Oak knotty  
 Vertical fiber course  
 Applications in lacquered metal  
 Clear glass  
 Handle 7002 stainless steel



#### Model 2402

Concrete look  
 with pilaster strips in stainless steel  
 Handle 7041 stainless steel

Illustrations partly with optional extras

#### Free choice:

What you see on every entry door photo is always just ONE design variation. In fact, there are countless design options. Depending on the model, you can choose between different types of wood, grooves, pilaster strips, RAL colors and much more. This is how a UNILUX door model turns into your own personal dream entry door.



#### Model 2403

Pine, vertical fiber course  
RAL 7016 and 7040 with pilaster  
strips in stainless steel, clear glass  
Handle 7090 stainless steel



#### Model 2404

Oak, vertical fiber course  
with pilaster strips in stainless steel  
Clear glass  
Handle 7041 stainless steel



#### Model 2405

Spruce, vertical fiber course  
with applications in slate look  
and pilaster, clear glass  
Handle 7090 stainless steel



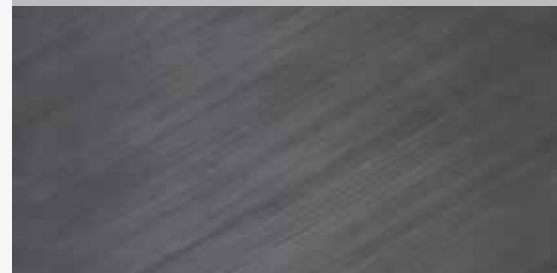
#### Model 2406

Oak, vertical fiber course  
with applications in slate look  
and pilaster strips, design glass  
Handle 7041 stainless steel

### Classic, of course:

Applications of slate slabs  
from the prehistoric times  
give your entry door a  
particularly individual  
touch.

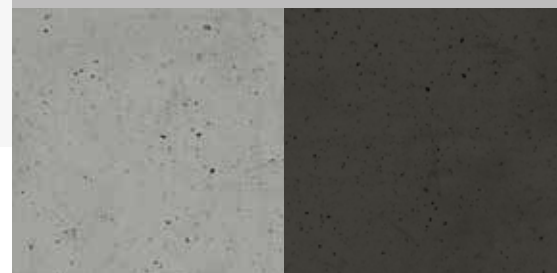
#### Slate



### Classic, modern:

Without concrete, architecture  
would have been inconceivable  
since Bauhaus movement. This  
application underlines modern  
architecture congenially.

#### Concrete gray & anthracite





Live the way you are – naturally individual:  
UNILUX wooden entry doors



## UNILUX HighLine panel doors

---

Timeless.  
Balanced.  
Personal.

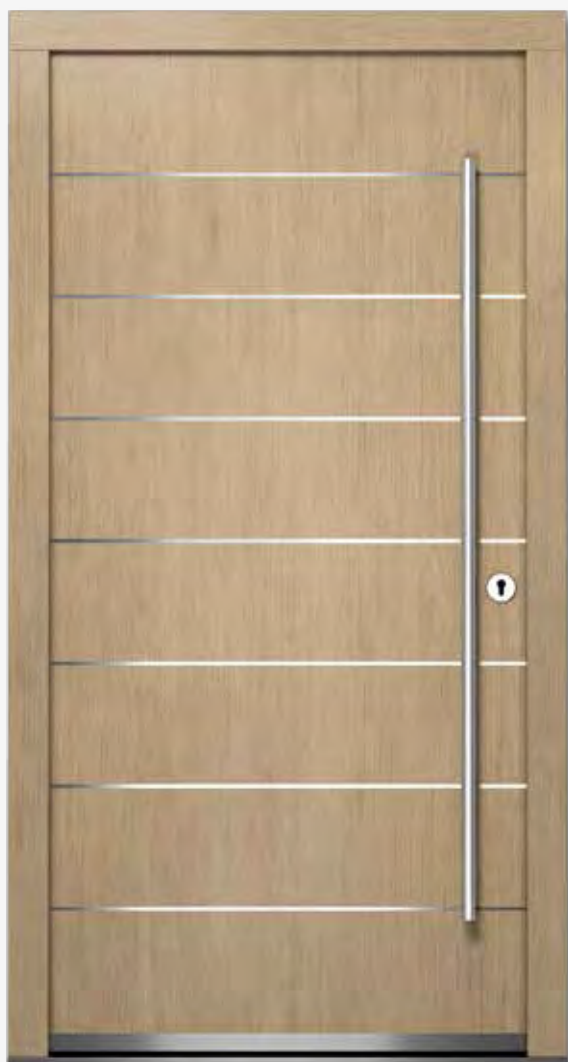
---

For a planner a house door may only represent a functional connection between inside and outside. But it's actually a lot more. It's the business card for your house. The visible access to your individual, unique home. That's why it should reflect your individuality, too, and show the world outside who you are.

**HighLine panel doors are a virtuoso when playing with geometric forms. Because this style blends aesthetics with dynamics, it gives timeless architecture a powerful individual note.**

**Set accents: HighLine panel doors.**





#### Model 2103

Oak  
 Vertical fiber course with  
 pilaster strips in stainless steel  
 Handle 7090 stainless steel



#### Model 2104

Oak  
 Horizontal fiber course with  
 pilaster strips in stainless steel  
 Handle 7101 stainless steel



#### Model 2106

Varnished pine  
 Vertical fiber course with  
 pilaster strips in stainless steel  
 Handle 7090 stainless steel

Illustrations partly with optional extras

#### That little extra:

Horizontal pilaster strips are  
 a design element that add  
 extra structure and elegance  
 to the entry door (see Models  
 2103, 2104 and 2106).

#### Pilaster strips





### Model 2107

Larch  
Vertical fiber course with fillets  
Design glass  
Handle 7090 stainless steel



### Model 2108

Spruce  
Vertical fiber course with fillets  
Design glass  
Handle 7090 stainless steel



### Model 2109

Varnished pine  
Horizontal fiber course with fillets  
Design glass  
Handle 7093 stainless steel

## Strong in every thickness:

Choose between 2 frame depths (78 and 90 mm) and 3 sash thicknesses (78, 90 and 100 mm). Five strong connections that can withstand a lot.

### Installation depth





#### Model 2114

Spruce  
 Horizontal fiber course with applications  
 made of metal and pilaster strips in  
 stainless steel  
 Design glass  
 Griff 7093 stainless steel



#### Model 2110

Oak  
 Vertical fiber course  
 with ornamental grooves  
 Design glass  
 Handle 7093 stainless steel



#### Model 2111

Pine  
 Horizontal fiber course  
 with applications made of metal  
 Clear glass  
 Handle 7041 stainless steel

Illustrations partly with optional extras

#### Our tip for you:

Pretty and practical.  
 A stainless steel kick plate  
 doesn't just look great –  
 it also protects your door.

Stainless steel base





### Model 2113

Pine  
Horizontal fiber course with applications  
made of stainless steel  
Clear glass  
Handle 7041 stainless steel



### Model 2115

Larch  
Vertical fiber course  
Design glass  
Handle 7003 stainless steel



### Model 2116

Spruce  
Vertical fiber course with  
applications made of metal and  
stainless steel ornamental grooves  
Design glass  
Handle 7003 stainless steel



### Model 2115

Larch





**Model 2102**

Traffic white (RAL)  
 Handle 7010 stainless steel



**Model 2105**

Lower panel and frame  
 Silk gray (RAL), Top panel pearl  
 white (RAL), Design glass  
 Handle 7012 stainless steel



**Model 2112**

Blue gray (RAL)  
 Clear glass  
 Handle 7043 stainless steel



**Model 2127**

Pine green (RAL)  
 Clear glass  
 Handle 7001 polished brass



**Model 2128**

Traffic red (RAL)  
 Pave white matt glass  
 Handle 7017 stainless steel  
 Stainless steel base (surcharge)



**Model 2112**

Basalt gray color



**Model 2105**

Anthracite gray color



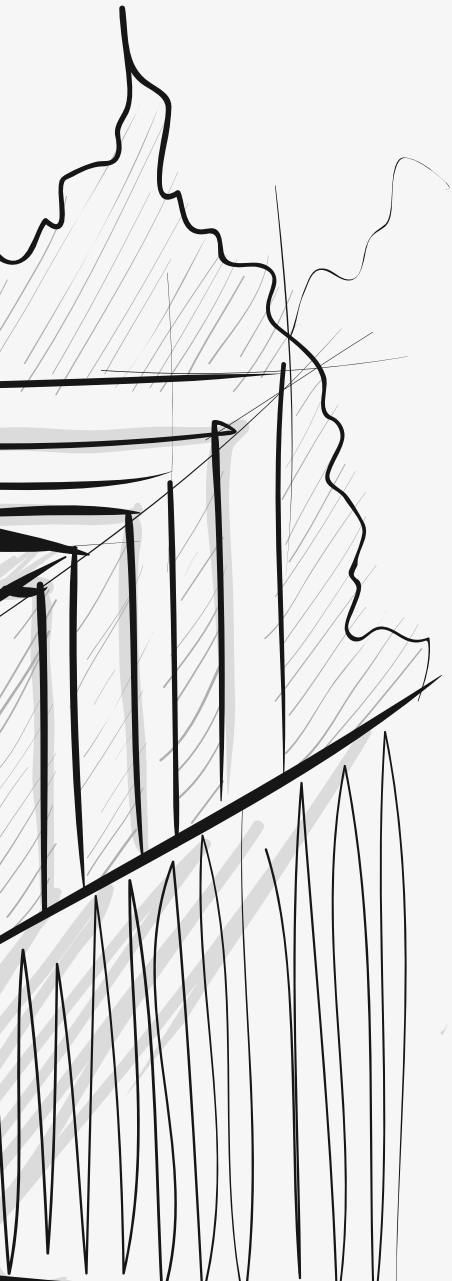
**Model 2102**

Anthracite gray color

Live the way you are – naturally individual:  
**UNILUX** wooden entry doors







## UNILUX HighLine frame doors

---

Original.  
Classic.  
Everlasting.

---

There are forms and colors that leave any fashion far behind. Designs that have lasted for decades or even centuries and will continue to do so in the future.

**HighLine frame doors stand for a style that fits into the overall picture true to the original. It's a natural for renovations of older houses and for traditionally oriented architecture.**

**As beautiful as ever: HighLine frame doors.**





**Model 2218**

Jatoba wood tone  
Masterlign® glass  
Handle 7003 stainless steel



**Model 2224**

Purple red (RAL)  
Clear glass  
Handle 7002 stainless steel



**Model 2206**

Vermilion (RAL)  
Design glass  
Handle 7011 stainless steel

**Massive appreciation:**

Indestructible wood,  
tailored for perfect fit.  
A solid wood top layer is  
the icing on your high-  
quality UNILUX entry door.

High quality solid wood





**Model 2200**

.....  
Pine  
Clear glass  
Handle 7002 stainless steel



**Model 2201**

.....  
Pine  
Clear glass  
Handle 7002 stainless steel

**Our tip for you:**

Selecting a striking handle provides the design of your dream door with its visual completion.

**Handle**







#### Model 2210

Walnut wood tone  
 Baroque white glass  
 Handle 5000 polished brass



#### Model 2212

Concrete gray (RAL)  
 Madras Flos glass  
 Handle 5000 polished brass



#### Model 2213

Platinum gray (RAL)  
 Clear glass  
 Handle 5000 polished brass

#### Incidence of light:

You can determine light, transparency and atmosphere from a large selection of ornamentat glass patterns.

#### Obscure glass





### Model 2304

.....  
Moss green (RAL)  
Ice flower glass  
Handle 5004 polished brass



### Model 2222

.....  
Fir green (RAL)  
Clear glass  
Handle 7011 stainless steel



### Model 2304

.....  
Moss green (RAL) color



**Model 2227**

Black blue (RAL)  
Design glass  
Handle 7000 polished brass



**Model 2228**

Wine red (RAL)  
Clear glass  
Handle 7001 polished brass



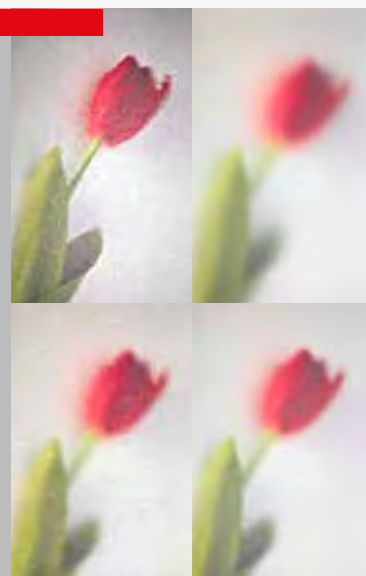
**Model 2230**

Light gray (RAL)  
Baroque white glass  
Handle 7001 polished brass

**Our tip for you:**

Provide exciting accents, for example using special glass – nothing sets a house door apart like its glass.

Glass







**Model 2302**

.....  
Slate gray (RAL)

Clear glass

Handle 6002 polished brass





**Model 2303**

Wine red (RAL),  
Design glass  
Handle 5004 polished brass



**Model 2226**

Traffic white (RAL)  
Clear glass  
Handle 5004 polished brass

**Our tip for you:**

Make it difficult for burglars. With the RC2-tested doors, you and your family can gain extra security.

**RC2 test**





**Model 2208**

Iron gray (RAL)  
Niagara white blank glass  
Handle 5000 polished brass



**Model 2209**

Moss green (RAL)  
Baroque white glass  
Handle 5000 polished brass  
without glass strips outside





Live the way you are – naturally individual:  
**UNILUX** wooden entry doors



## UNILUX JuniorLine entry doors

---

Attractive.  
Cute.  
Great price.

---

Confident performance, modest pricing. Like its two brothers ExclusivLine and HighLine, the JuniorLine is made of high-quality wood. It's attractive for its familiar quality, mature technology and fresh design.

You have a choice of four different handles, four different glass styles and all colors.

**With the JuniorLine you get an original UNILUX entry door at a very cost-effective price you won't need to compromise.**

**Brand quality that doesn't cost the world: JuniorLine.**





**Model 2011**

Red brown (RAL)  
 Handle 7010 stainless steel



**Model 2015**

Iron gray (RAL)  
 Master carré glass  
 Handle 7002 stainless steel



**Model 2016**

Cobalt blue (RAL)  
 Clear glass  
 Handle 7002 stainless steel



**Model 2011**

Perlbeige (RAL) color





**Model 2018**

.....  
Ruby red (RAL)  
Master carré glass  
Handle 7002 stainless steel



**Model 2015**

.....  
Iron gray (RAL) color



**Model 2022**

Beige (RAL)  
Clear glass  
Handle 7002 stainless steel



**Model 2023**

Traffic white (RAL)  
Master carré glass  
Handle 7012 stainless steel





**Model 2015**

Iron gray color



**Model 2011**

Anthracite gray color



**Model 2023**

Traffic white color



Live the way you are – naturally individual:  
UNILUX wooden entry doors





**Just like you**

---

# Your dream door from UNILUX

---

UNILUX doesn't make you go by the book. Every entry door is a unique production in which you determine not only the model, size, wood, and color, but also all the details.

**Special light cut-outs, optional sidelights and transoms allow you to set individual accents. Even the selection of the glass and the handle expresses your entirely personal, unique taste.**

Thanks to this wide variety of options every UNILUX door has individuality built in at the factory.

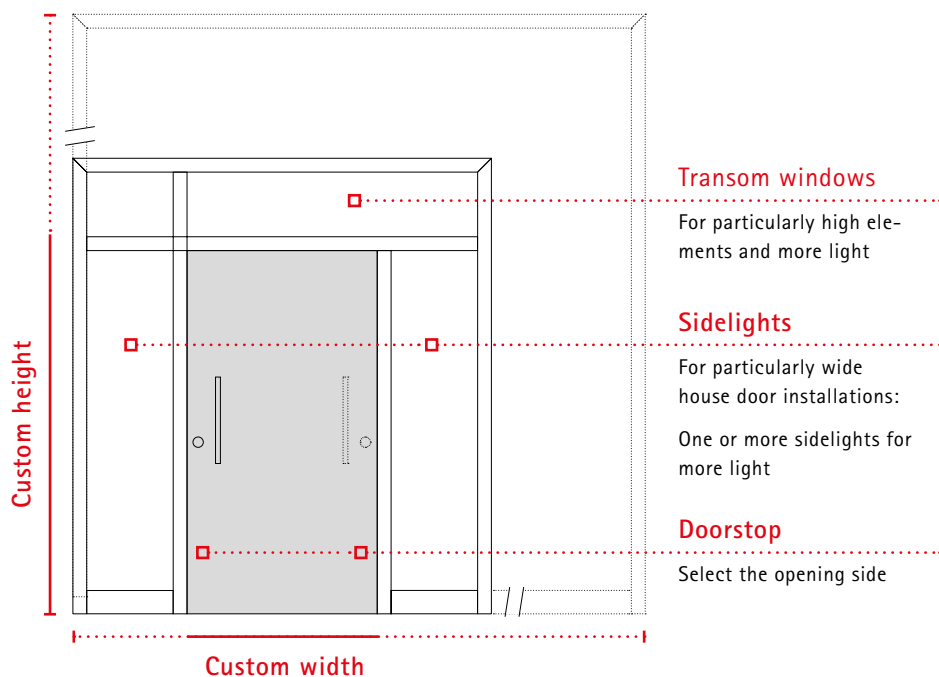


## Design freedom in shapes and materials

### Seated as though it were cast there

How large should a house door be? On which side must it open? Is one leaf better or two? And how much daylight should the door let in? These are questions that everybody will answer differently.

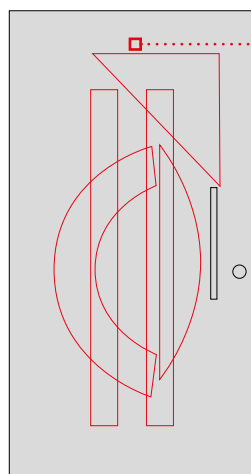
That is why you not only get our mass-produced UNILUX house doors in your personal length and width preferences, but also in the fittings of your choice. For example, with one or two flanking sidelights and transoms. Elements that highlight your door and set additional design accents.



### Let there be light

Entrances don't have to be pitch-dark. With light cut-outs in your house door, glazed sidelights and transoms let brightness into your hallway even without lamps.

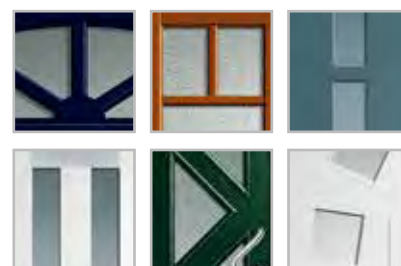
That makes your entry more livable. Light, home-delivered by nature.



### Light cut-outs

Rectangle or triangle? Symmetric panels or sweeping curves? With the light cut-outs, too, you have all the options you're used to getting from UNILUX.

Variety for more individuality.

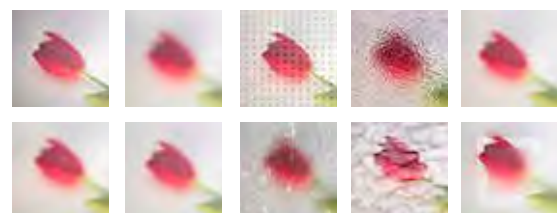






### More than bright

Not all glass is the same. Think for a moment how versatile this familiar material can be. From simple ornamental glasses to striking designer glasses.



### A handle on design

Curled brass or straight-forward stainless steel? Historical classic or minimalistic modern? Every UNILUX handle isn't just a rock-solid piece of workmanship, it's also a visual gem expressing your taste and your style.



### Base

For many models you can get an optional robust stainless steel guard.

## Freedom of design in terms of material and color



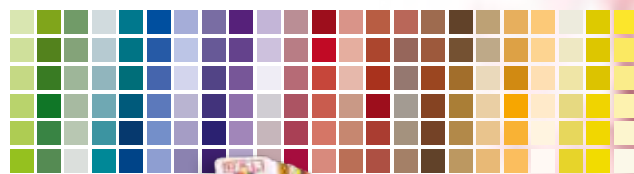
### Life is colorful

Every UNILUX door matches your house not only in terms of architecture, but also color. The selection of colors and color variants leaves nothing to be desired.

Ask your UNILUX retailer for color fans. That gives you confidence that your favorite red (or favorite gray, or favorite blue etc.) will work on your house door.

And you can select from 15 semitransparent glazes and about 200 covering RAL color paints. For the wood itself you can choose between the robust species of pine, larch and exotic wood.

This fits your entry door harmoniously into the architecture of your house.

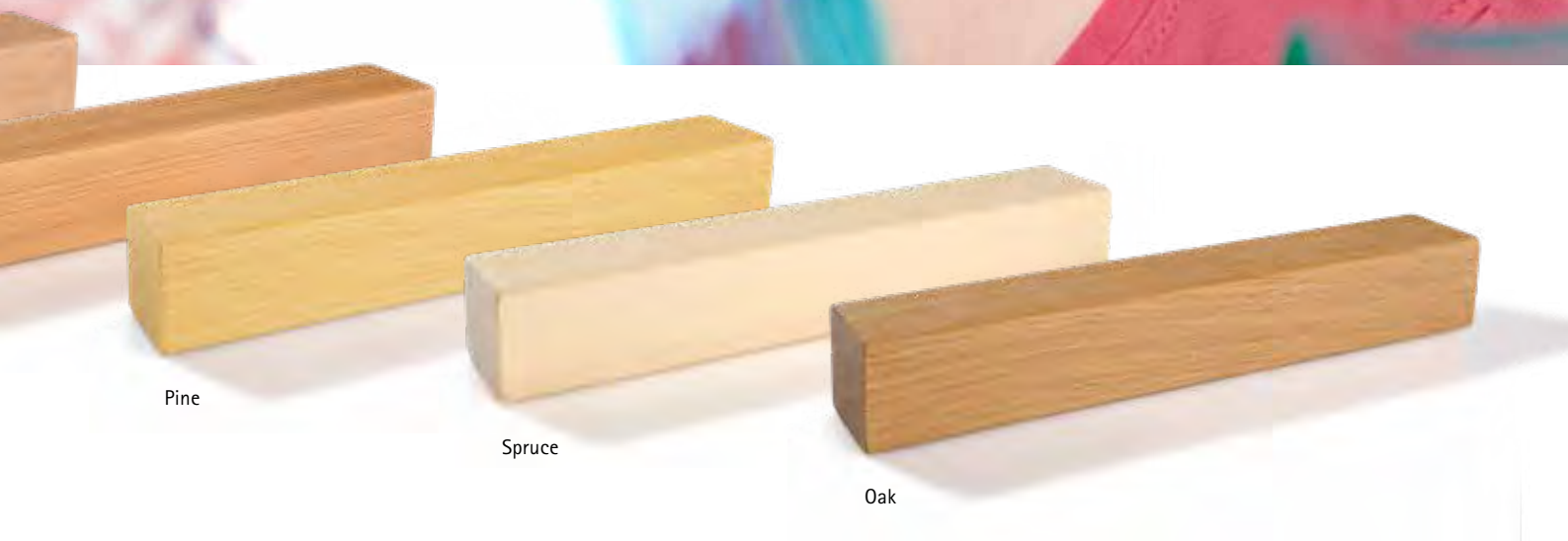


RAL colors  
Wood patterns



Eucalyptus grandis

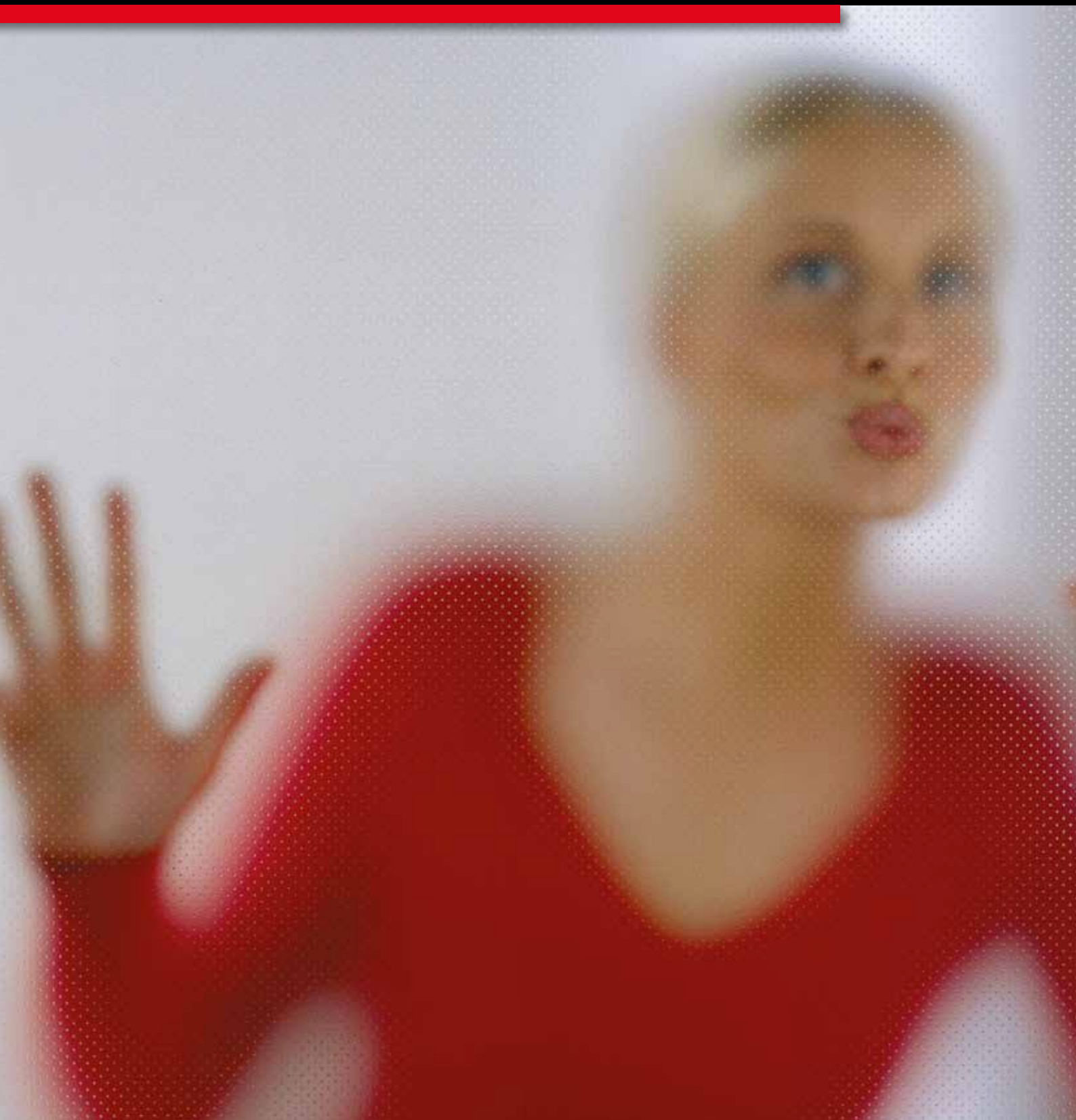
Larch



Choose from the following wood species: Oak, pine, larch, eucalyptus grandis and spruce along with 20 glazing tones.  
Your UNILUX specialist dealer will be pleased to advise you on which glaze colors can be used on the respective types of wood.



Live the way you are – naturally individual:  
UNILUX wooden entry doors



## Glass-clear style

---

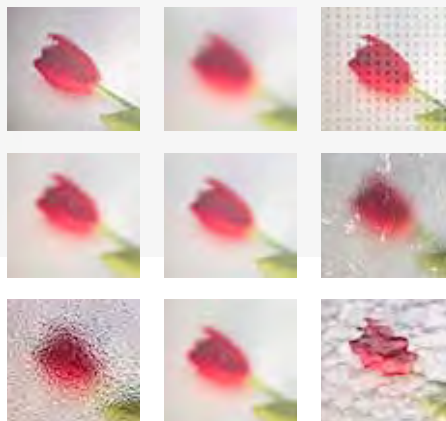
# Glass and glass variants

---

Glass is a special material that lends every door its particular individual tone. We offer entry door glass that could hardly come in more variety – and we have individual design suggestions for every door. This permits you to express your personal style even when selecting the glass.

**UNILUX glasses are attractive because they let natural light in while still leaving the view of strangers outside. Each of our ornamental and design glasses is proof that beauty and functionality aren't mutually exclusive.**

**UNILUX – glass can be so unique.**





**Caution: temptation!**

This sample case has it all. It can show you just what options you have when it comes to glass. It doesn't always have to be "just smooth". Ornamental and design glasses bring structure and elan to a familiar material.

Ask your local UNILUX retailer. He will be happy to show you the UNILUX glass sample case.







Madras Flos



Uadi white



Weed



Flame



Punto white



Satinato



Pave matt white



Live the way you are – naturally individual:  
UNILUX wooden entry doors



## A handle on aesthetics

---

# Handles and handle variants

---

A door handle has to be tough – not everyone puts on their silk gloves to handle it. That's why robustness is the basic requirement for a good handle. But not only material resistance is important to us, but also the visual.

**A UNILUX door handle looks inviting at all times.  
It complements the architecture and is the dot on the  
I of a representative door.**

**Good feeling in the hand, attractive appearance –  
door handles from UNILUX.**





## Standard equipment

### UNILUX handle product range for exterior and side entrance doors

These handles are available at no extra charge



## Outer escutcheons

Optionally, equip your door with a drilled round escutcheon or an attached escutcheon.  
For this you have these different designs as default.



**3000**  
stainless  
steel  
matt



**3002\***  
bronze Old  
German



**3003\***  
brass  
polished



**3005\***  
stainless  
steel  
matt



**3007\***  
Alu  
silver



**3008\***  
brass  
polished



**3011\***  
stainless  
steel  
matt



**3012\***  
stainless  
steel  
matt



**3013**  
stainless  
steel  
matt



**3015**  
stainless  
steel  
matt

## Interior handle

The standard equipment (S) includes a door lever on the inside that you can choose from 20 different designs\*.  
For more individuality the handle package + offers additional colors.



**2000\*** ○  
stainless steel  
matt, +



**2001** ○  
stainless steel  
matt, S



**2002** ○  
stainless steel  
matt, S



**2003** ○  
stainless steel  
matt, S



**2005** ○  
stainless steel  
matt, +



**2007** ○  
stainless steel  
matt, S



**2014** □  
stainless steel  
matt, S



**2200**  
polished brass, S



**2203\*** ○  
Alu silver, S



**2204**  
brass polished, +



**2300\*** □  
stainless steel  
matt, +



**2301\*** □  
stainless steel  
matt, +

○ = round, ○ = oval, □ = angular

## Handle package +

### The package for handy accents

This handle package provides you with a diverse selection of outer handles in three stages. You can choose between short handles, long handles and handles with a special feel. Of course, you will also find the matching outer escutcheons and the range of internal presses at UNILUX.

### Components of handle package +

With this package, you have the choice between different outer handles and escutcheon as well as internal presses in numerous designs.



**7081 (S)**  
 L 295 mm



**7082 (S)**  
 L 295 mm



**7010**  
 L 330 mm



**7011**  
 L 330 mm



**3017**  
 stainless  
 steel  
 matt



**3019**  
 stainless  
 steel  
 matt



**7012**  
 L 330 mm



**7088 (S)**  
 L 350 mm



**7033 (S)**  
 L 400 mm



**7091**  
 L 400 mm



**7092**  
 L 800 mm



**7041**  
 L 800 mm



**7097**  
 L ≤ 1.500 mm

\*available in various versions.  
 (S) = slanted





**4006\***  
.....  
Alu steel  
colored



**4007\***  
.....  
Alu brown



**4008\***  
.....  
Alu silver



**4009\***  
.....  
Alu white



**5003\***  
.....  
Alu bronze



**5004\***  
.....  
brass polished



**5300\***  
.....  
Alu silver



**5301\***  
.....  
burnished brass



**6000**  
.....  
stainless steel  
matt



**6001**  
.....  
stainless steel  
matt



## Handle package ++

### Slim look and special feel

With the three handle packages you determine the optical effect of your entry door. While the Package + contains modern and classic, functional handles, the Package ++ offers selected long handles over almost the entire door height as a design element, supplemented by selected short handles.

### Components of handle package ++

Can it be even more valuable? With this package you can choose from numerous outer and interior handles, which convince in form and function.



**4006\***

stainless steel  
matt



**4007\***

stainless steel  
matt



**4008\***

stainless steel  
matt



**4009\***

stainless steel  
matt



**5000\***

brass  
polished



**5003\***

brass  
polished



**7017 (S)**

L 325 mm



**7043**

L 500 mm



**7036 (S)**

L 600 mm



**7027**

L 800 mm



**7029**

L 800 mm

\*available in various versions.  
(S) = slanted



**7094**  
.....  
L 1.000 mm



**7030**  
.....  
L 1.000 mm



**7007 (S)**  
.....  
L 1.800 mm



**7096 (S)**  
.....  
L ≤ 2.200 mm



**7097**  
.....  
L ≤ 2.200 mm



**7098**  
.....  
L ≤ 2.200 mm

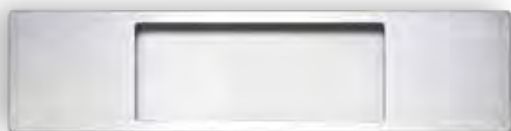


## Handle package +++

Package +++ fulfills your desire for an unique entry door experience through various applications and the highest quality materials. No matter which package you choose: Already at the first touch of the handle you feel the value and stability.

### Components of handle package +++

A dream. You can expect perfectly shaped outer handles, which give your door a unique feel and value.



**7102**

stainless steel  
matt



**7101**

stainless steel  
matt



**7001**

L 300 mm



**7038 (S)**

L 600 mm



**7039 (S)**

L 1.000 mm



**7095**

L 1.050 mm



**7037 (S)**

L 1200 mm

(S) = slanted



**7042**  
.....  
L 1.600 mm



**7096 (S)**  
.....  
L > 2.200 mm



**7097**  
.....  
L > 2.200 mm



**7098**  
.....  
L > 2.200 mm



**7099**  
.....  
all lengths



**7100 (S)**  
.....  
all lengths

Live the way you are – naturally individual:  
UNILUX wooden entry doors







## Advantages and technical details

---

# Equipment in focus

---

It's easy to talk about quality. But what does it actually mean? The following photos give you an idea of what is behind the style-defining UNILUX designs - namely solid workmanship.

The cross-sections and macro shots also make the interior of our entry doors transparent. This way, for example, you can recognize the difference between different frame installation depths or between a solid wood top layer and a plywood top layer.

Your UNILUX dealer would be happy to show you more details - after all, he is our partner when it comes to quality.



## Advantages and technical details

The details make the difference.



### Variable door thicknesses

Two frame installation depths (78 and 90 mm) with three sash thicknesses (78, 90 and 100 mm) allow for five different combinations, one of which is flush on the outside.



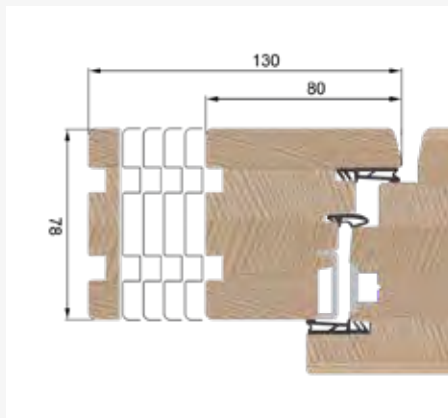
### Glass stops

It pays to pay attention to details. Thanks to the type of glass strips integration – rustic rebated, diagonally rebated or straight flush-mounted – you can influence the visual effect (options available for almost all doors).



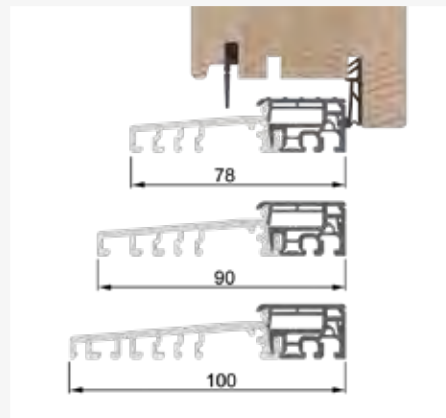
### Optional solid wood top layer

Using this top layer, you can upgrade your entry door (in comparison: plywood on the left, solid wood on the right).



### Variable frame thicknesses

You can choose between 80 and 130 mm (in 10 mm increments) at the side and top.



### Threshold 78, 90, 100, edged

You can choose the threshold according to the sash thickness (78, 90 or 100 mm).



### Solid wood insert in the glass rebate

Concealed nailing of the glass stops is possible on all panel doors – this benefits the overall visual impression.



### 3 gaskets

All good things ... Three seals (stop, middle, overlap) make your entry door bulkhead tight.



### Concealed or accented hinges

In many constructions (up to 150 kg), the stainless steel hinge can be concealed. Or you can emphasize it by setting accents with one of 3 paint colors.



### Drop-down seal

No whistling here! Thanks to the lowering seal, there is not even breeze between the door and the floor.

## Further details at a glance:

- Wet glazing inside and outside for a better color matching with the wood
- Enlargement profiles of 25 and 50 mm
- RC2-tested

## Protection and security

---

# Not popular with burglars

---

Burglars are under time pressure. The more obstacles you can put in their way, the quicker they'll give up. That's why at UNILUX we don't just think about design and comfort, but also about security systems and locks. And these – as we demonstrate in the serious approach we take every day – aren't something you should save on.

**Good to know: Even in their standard version, UNILUX house doors have effective security mechanisms. We also offer add-ons that take these already-high mass-produced security standards and reinforce them even more.**

This is UNILUX's contribution to making sure that unwelcome guests don't even get in the door.



### Massive door frame with continuous one-piece striker plate

When it comes to security, a lot actually helps a lot. The more massive a door is, the more resistance it has against an attacker. With thicknesses of up to 79 millimeters, our doors provide robust natural protection against burglar.

All our models includes for a continuous one-piece striker plate. In practice this means: Since the locking generally engages firmly into that striker plate, the potential criminal has to break the entire bar out of the decorative frame – and that's a massive amount of extra work. This obstacle significantly raises the bar for burglars.



### Safety glass

Thanks to a specially developed highly crack-resistant polycarbonate film, the optional safety glass stays inside the sash even when it gets heavily hit – good for you, bad for potential break-ins. By the way, the impact-resistant P2A safety glass from UNILUX has been certified by the German National Authority on Fire Arms and Ammunition.

### Door catch

More effective and elegant than door chains.

The optional door catch provides additional locking from inside and also acts as a stop when the door is only opened a crack. In case of an undesired visitor, it therefore makes it impossible to get a foot between the door and the frame.





### ExclusivLine entry doors



Page 12  
 .....  
 Model 2400



Page 12  
 .....  
 Model 2401



Page 12  
 .....  
 Model 2402



Page 13  
 .....  
 Model 2403



Page 13  
 .....  
 Model 2404



Page 13  
 .....  
 Model 2405



Page 13  
 .....  
 Model 2406

### HighLine panel doors



Page 16  
 .....  
 Model 2103



Page 16  
 .....  
 Model 2104



Page 16  
 .....  
 Model 2106



Page 17  
 .....  
 Model 2107



Page 17  
 .....  
 Model 2108



Page 17  
 .....  
 Model 2109



Page 18  
 .....  
 Model 2110



Page 18  
 .....  
 Model 2111



Page 19  
 .....  
 Model 2113



Page 18  
 .....  
 Model 2114



Page 19  
 .....  
 Model 2115



Page 19  
 .....  
 Model 2116



Page 20  
 .....  
 Model 2127



Page 20  
 .....  
 Model 2128



Page 20  
 .....  
 Model 2102

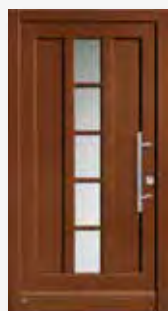


Page 20  
 .....  
 Model 2105



Page 20  
 .....  
 Model 2112

## HighLine frame doors



Page 24  
Model 2218



Page 24  
Model 2206



Page 24  
Model 2224



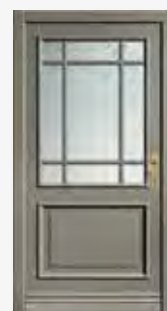
Page 25  
Model 2200



Page 25  
Model 2201



Page 26  
Model 2210



Page 26  
Model 2212



Page 26  
Model 2213



Page 27  
Model 2304



Page 27  
Model 2222



Page 28  
Model 2227



Page 28  
Model 2228



Page 28  
Model 2230



Page 29  
Model 2302



Page 30  
Model 2303



Page 30  
Model 2226



Page 31  
Model 2208



Page 31  
Model 2209

## JuniorLine entry doors



Page 34  
Model 2011



Page 34  
Model 2015



Page 34  
Model 2016



Page 35  
Model 2018

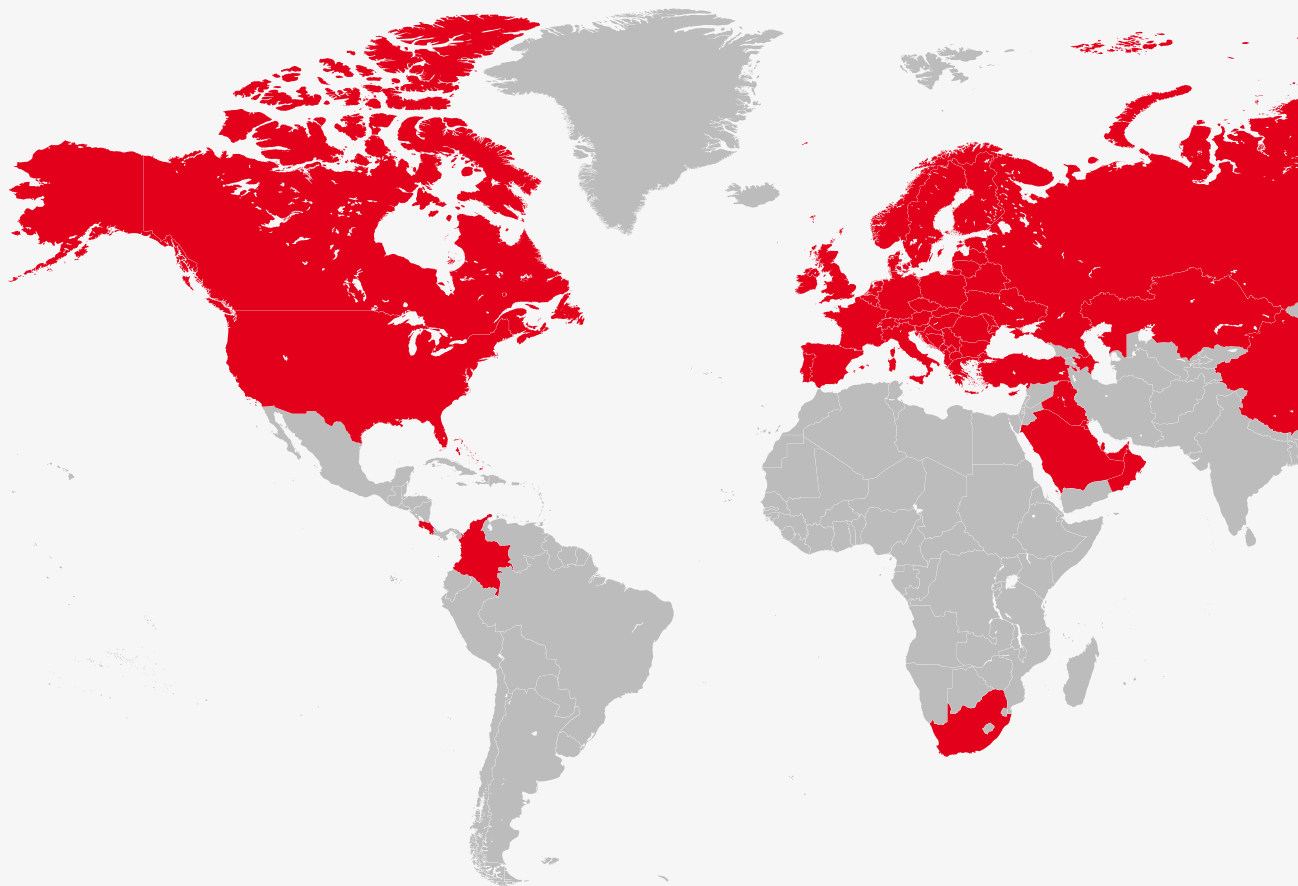


Page 36  
Model 2022



Page 36  
Model 2023

## The reliability of a big name



UNILUX ensures award-winning long-term progress

- by selecting the right partners and raw-material suppliers, and by being a member of leading institutions and associations:



UNILUX products meet international test and safety standards:



**HURRICANE TEST**  
Large Missile Impact and Cyclic Load  
AAMA/WDMA/CAS ASTM E1886/E1996  
TAS 201-203



Florida Certificate  
of Product Approval

## Company info

---

### Publisher

UNILUX GmbH  
54528 Salmtal / Germany  
Telephone +49(0)6578/189-0  
Facsimile +49(0)6578/1880  
Email [info@unilux.de](mailto:info@unilux.de)  
[www.unilux.de](http://www.unilux.de)

### Notes

The content of this catalogue is not legally binding and may be subject to technical changes as part of further developments or errors in the text, images or descriptions. We only allow images and text material – including excerpts – to be used upon request, and with our express written consent.

The image material used is for illustrative purposes. Differences in colour are unfortunately unavoidable due to printing. The sample illustrations are not to scale.

© 2019, UNILUX GmbH. All rights reserved.



UNILUX headquarters, Salmtal



UNILUX GmbH  
54528 Salmtal / Germany  
Telephone +49 (0) 65 78 / 189-0  
Facsimile +49 (0) 65 78 / 18 80  
Email [info@unilux.de](mailto:info@unilux.de)

[www.unilux.de](http://www.unilux.de)



WHERE QUALITY IS AT HOME

Member of the **WERU** Group